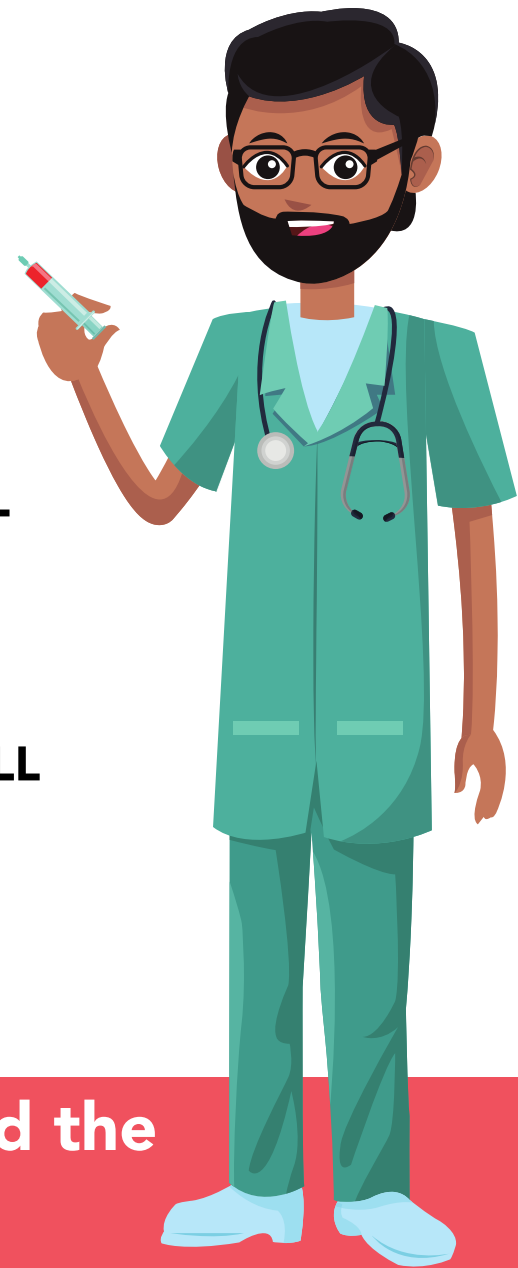




# BEFORE ENTERING OUR BUILDING:

**FOR THE HEALTH AND SAFETY OF OUR STAFF AND CHILDREN IN OUR FACILITIES, IF YOU OR ANYONE IN YOUR HOUSEHOLD IS EXPERIENCING SYMPTOMS, WHETHER MILD OR MAJOR, IT MUST BE DISCLOSED PRIOR TO DROP OFF.**

- **ALL CHILDREN, STAFF OR PARENTS ENTERING THE BUILDING WILL BE SUBJECT TO A TEMPERATURE CHECK**
- **ALL CHILDREN, STAFF OR PARENTS ENTERING THE BUILDING WILL BE SUBJECT TO HANDWASHING, AND WILL HAVE MANDATORY HANDWASHING EVERY HOUR**
- **ANY CHILD DISPLAYING SYMPTOMS WILL BE IMMEDIATELY ISOLATED AND CAREGIVERS WILL BE CONTACTED FOR PICK UP**



**For more information, please read the details below.** ↓ ↓ ↓

## **THERMOMETER CHECK**

- A temperature check will be issued to any child, staff or parent entering the building via a touch free infrared forehead thermometer.
- A temperature of 38 degrees and above will not be allowed to enter the facility and will be immediately denied care.

## **HAND WASH**

- Immediately upon entrance into the facility, any child, staff or parent entering the building will be directed to a pre-determined handwash station and expected to wash their hands as per Saskatchewan Health hand washing guidelines.
- Children are obligated to wash their hands thoroughly with staff member assistance.
- Children will receive hand sanitizer administration following their hand washing, and then be placed into their assigned classroom.
- Handwashing will be mandatory every hour.

## **SYMPTOMS**

- Any child experiencing or developing symptoms of COVID-19 in combination with a fever will be isolated immediately.
- Symptoms may be a combination of the following: coughing, fever, disorientation, fatigue, shortness of breath, bone or joint aches, headaches.
- Parents/Caregivers will be contacted immediately, and this child is required to be picked up as soon as possible from the facility.
- These children will not be allowed to return to our facilities until they have been cleared by a negative COVID-19 test or followed the 14-day isolation suggestion as per the Chief Medical Health Officer of Saskatchewan. Only when the 14-day isolation has passed, and the child no longer has symptoms can they return to our facility.
- ALL siblings of a child that is experiencing symptoms of COVID-19 will then have to follow the same guidelines.
- Classrooms of a child that has developed symptoms will be cleared of all remaining children and then completely sanitized.
- If a second child in the same classroom develops similar or different symptoms of COVID-19, ALL children in the classroom's parents or guardians will be contacted and made aware of that symptom. These caregivers will be given the choice to pick up their children immediately or not.

## **END OF DAY**

- Cleanup of the facility will follow instructions made by Public Health as well as our existing Outbreak policies and procedures.
- **IN THE INSTANCE OF A CONFIRMED CASE OF COVID-19** If ONE parent, staff or child has a confirmed case of COVID-19, we will immediately cease all operations of that facility until further notice.